



# PRODUCTION AREAS

# Some categories

- large industrial plants
- industrial areas
- spontaneous artisan settlements
- shopping centers
- neighborhood supermarkets.

# large industrial plants



Shell Godorf refineries – Cologne Germany



Shell Godorf refineries – Cologne Germany



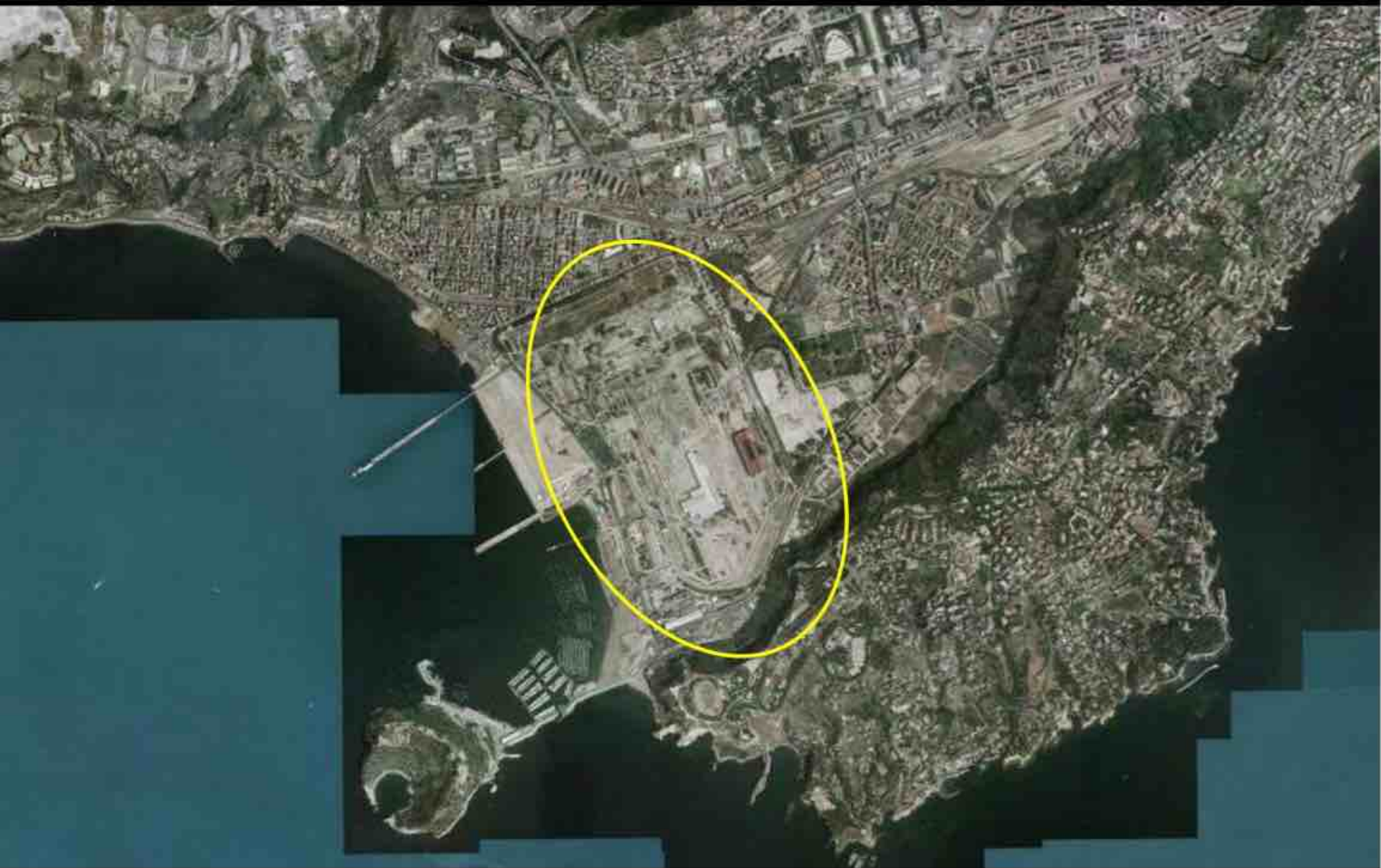
Riva Steelworks - Genoa



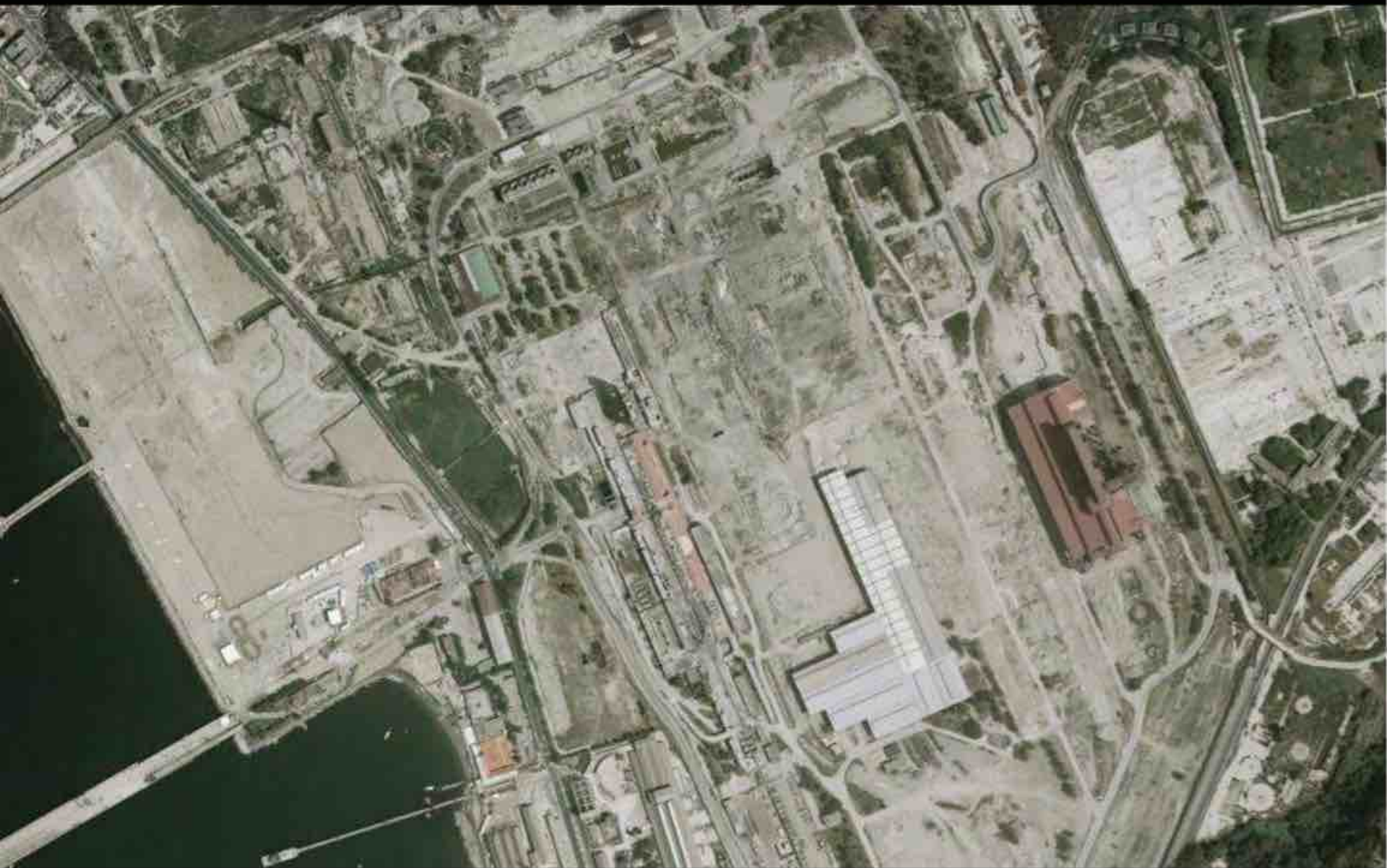
Riva Steelworks - Genoa



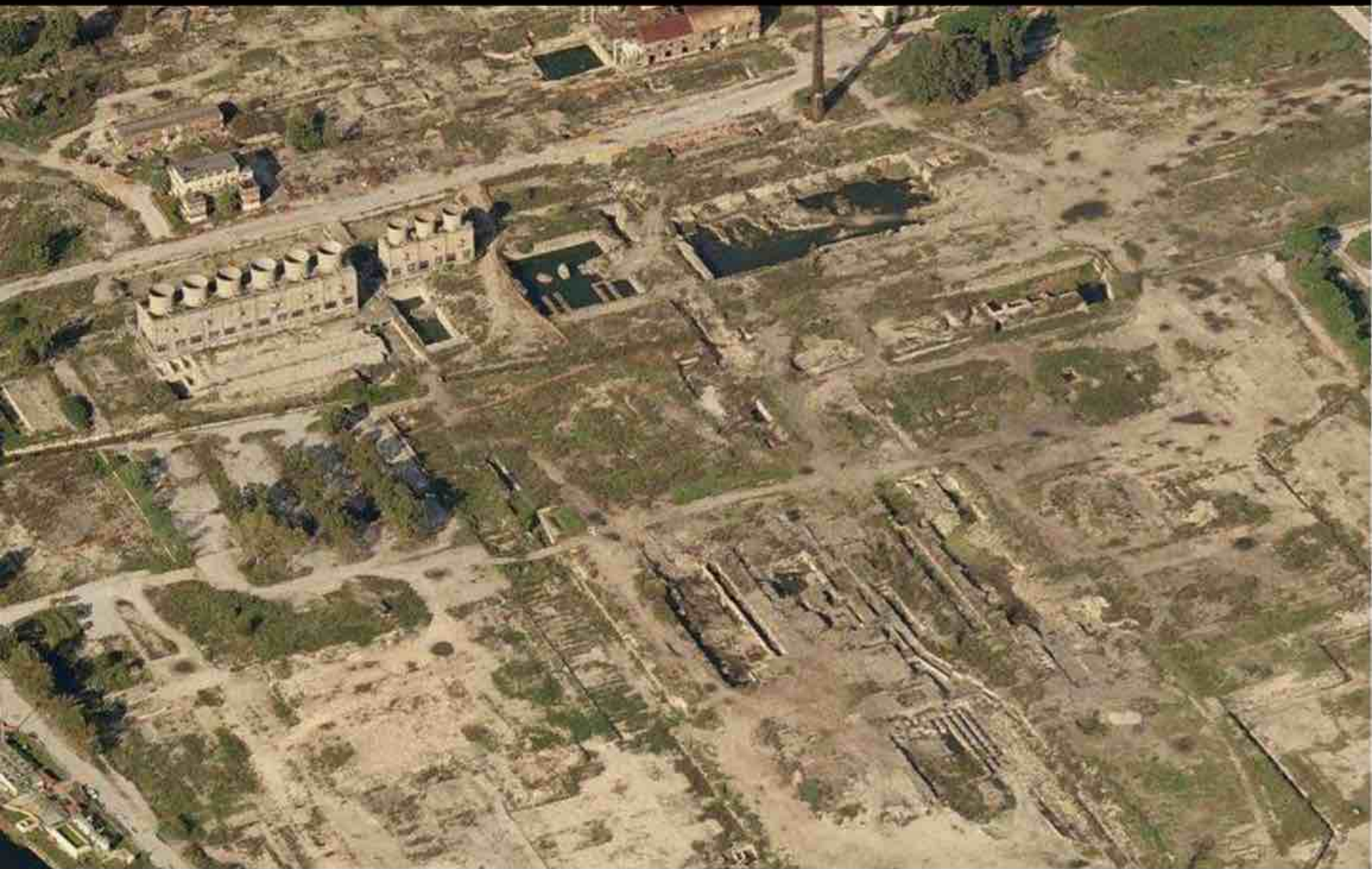
Riva Steelworks - Genoa



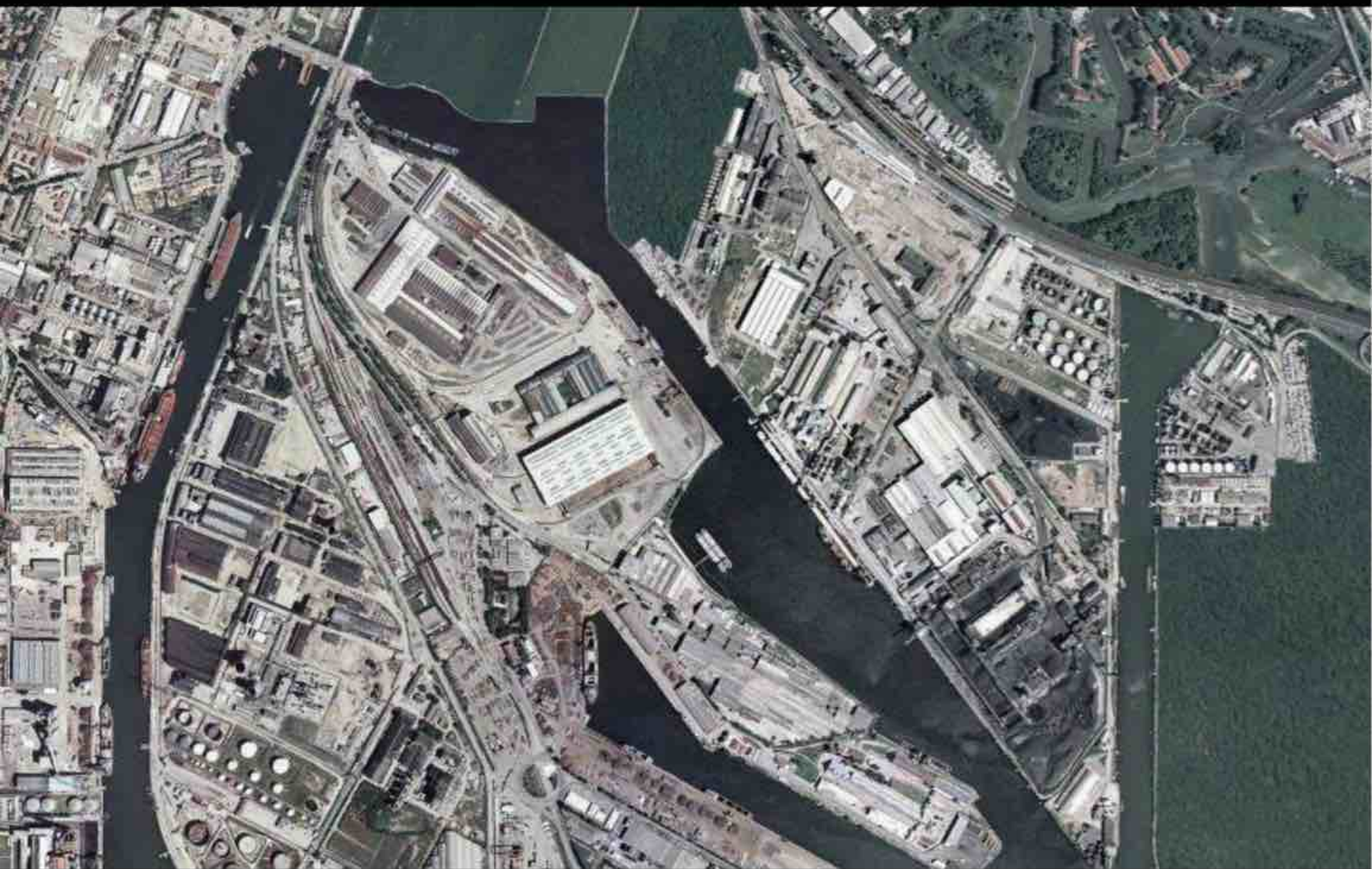
Bagnoli Steelworks - Naples



Bagnoli Steelworks - Naples



Bagnoli Steelworks - Naples



Industrial Areas Porto Marghera - Venice



Industrial Areas Porto Marghera - Venice



Industrial Areas Porto Marghera - Venice



Ilva Steelworks - Taranto



Ilva Steelworks - Taranto



Ilva Steelworks - Taranto



Ilva Steelworks - Taranto

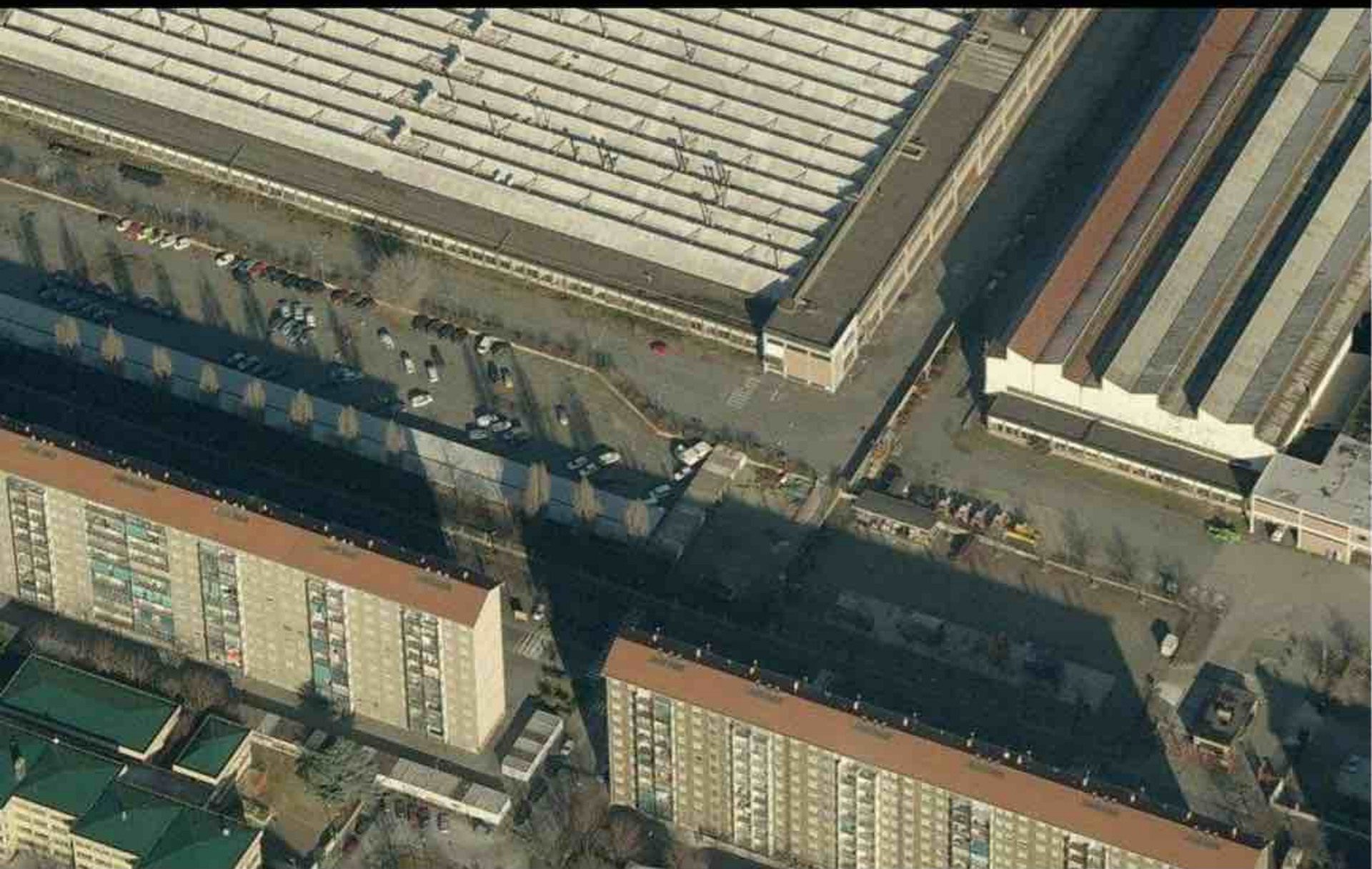


API Refineries - Falconara





FIAT Rivalta Plant - Turin



FIAT Rivalta Plant - Turin



Image © 2011 TerraMetrics  
Image © 2011 Google/Earth

©2010 Goo

Fukushima, Japan, nuclear power station

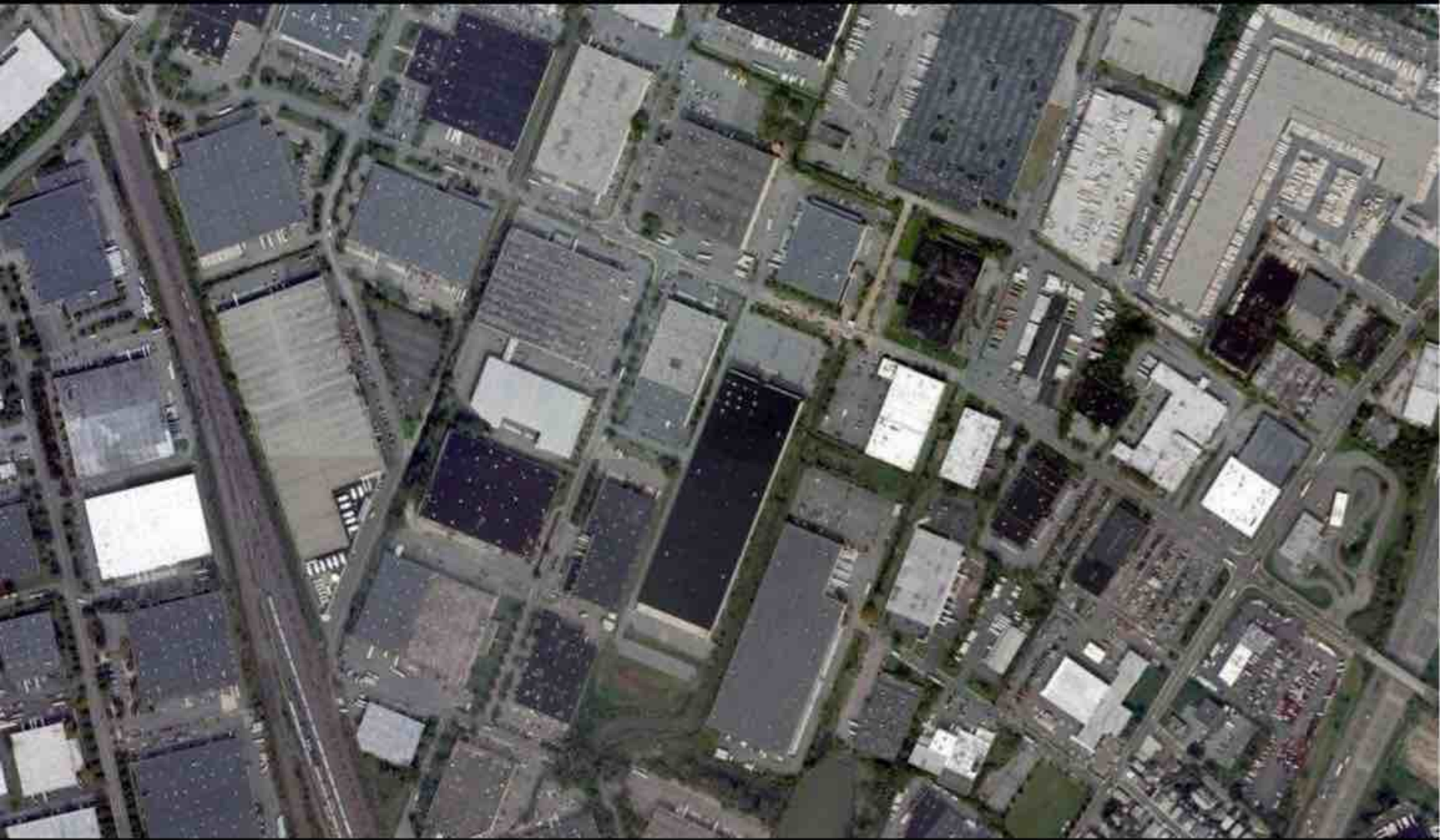




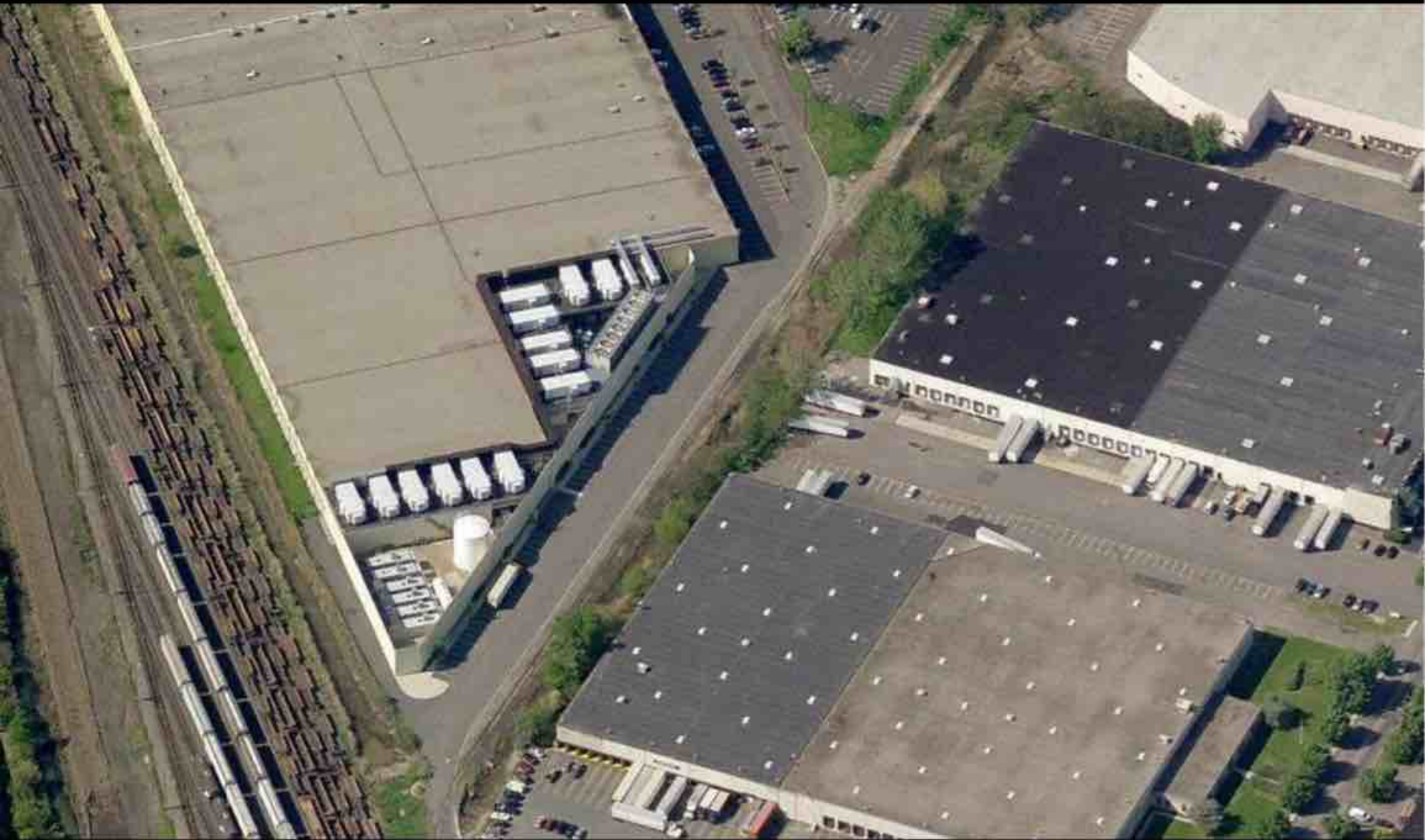


# industrial areas





NY



NY



Atessa Industrial Area – Sangro Valley



Atessa Industrial Area – Sangro Valley



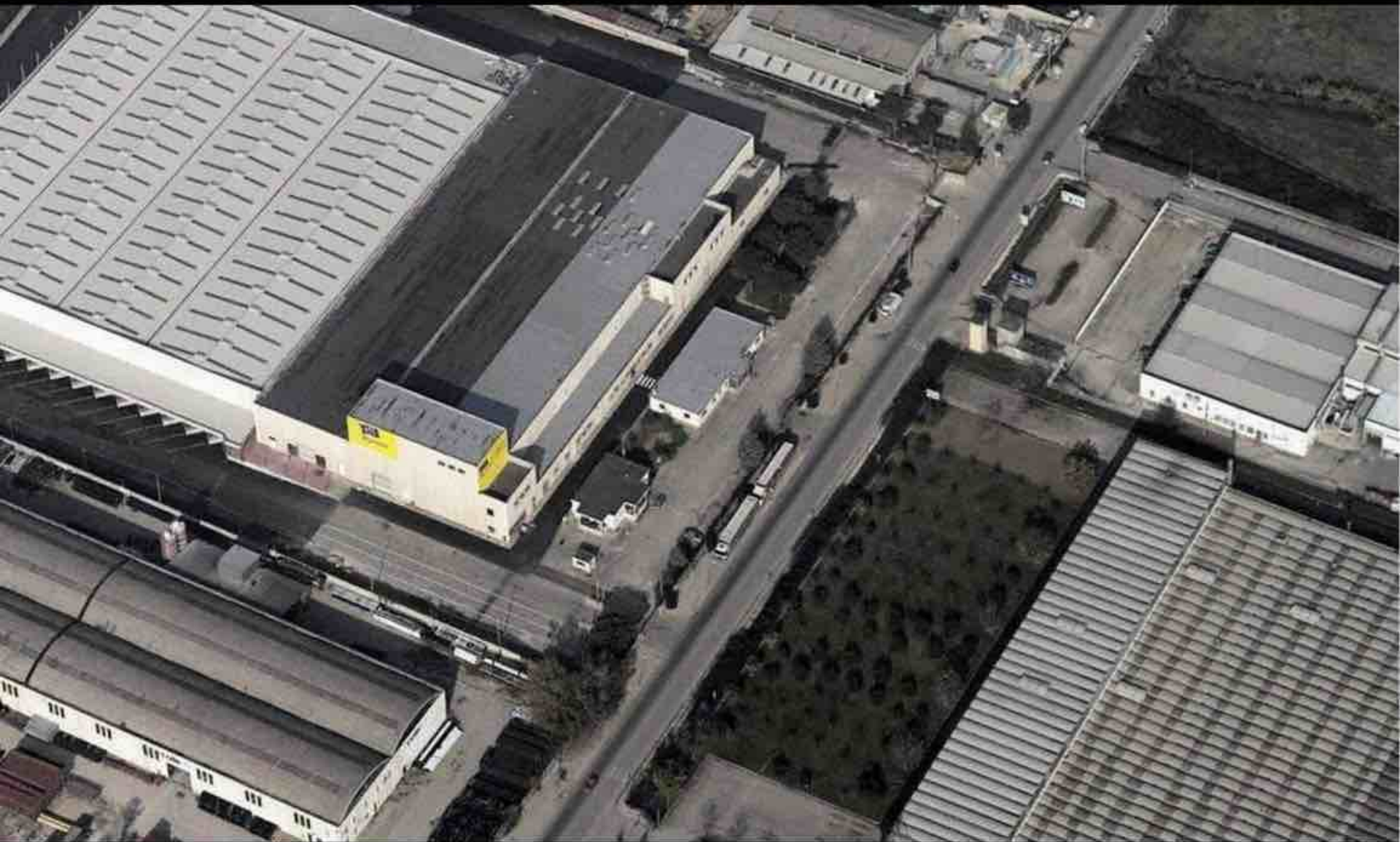
Atessa Industrial Area – Sangro Valley



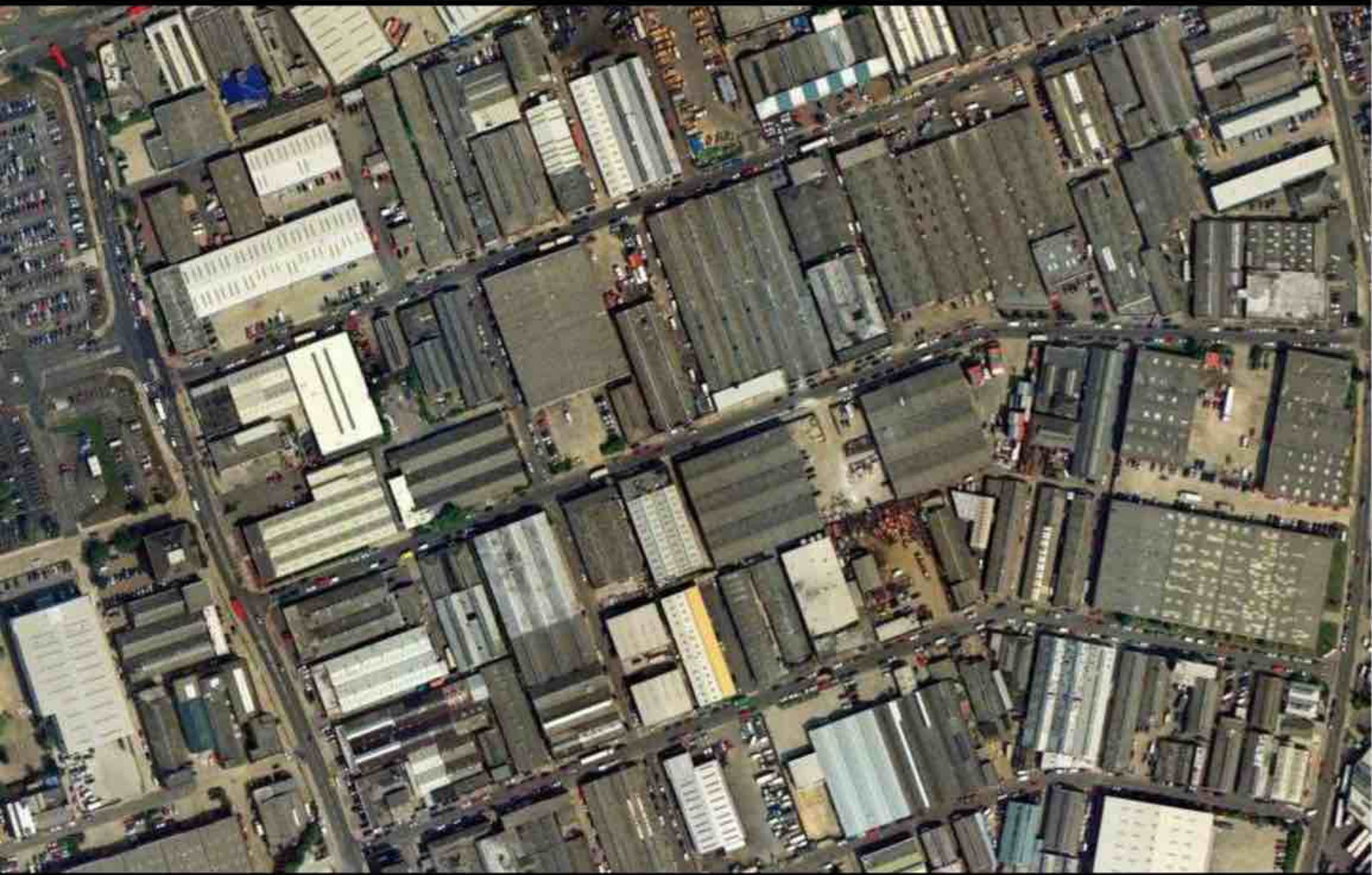
Industrial area of Pescara



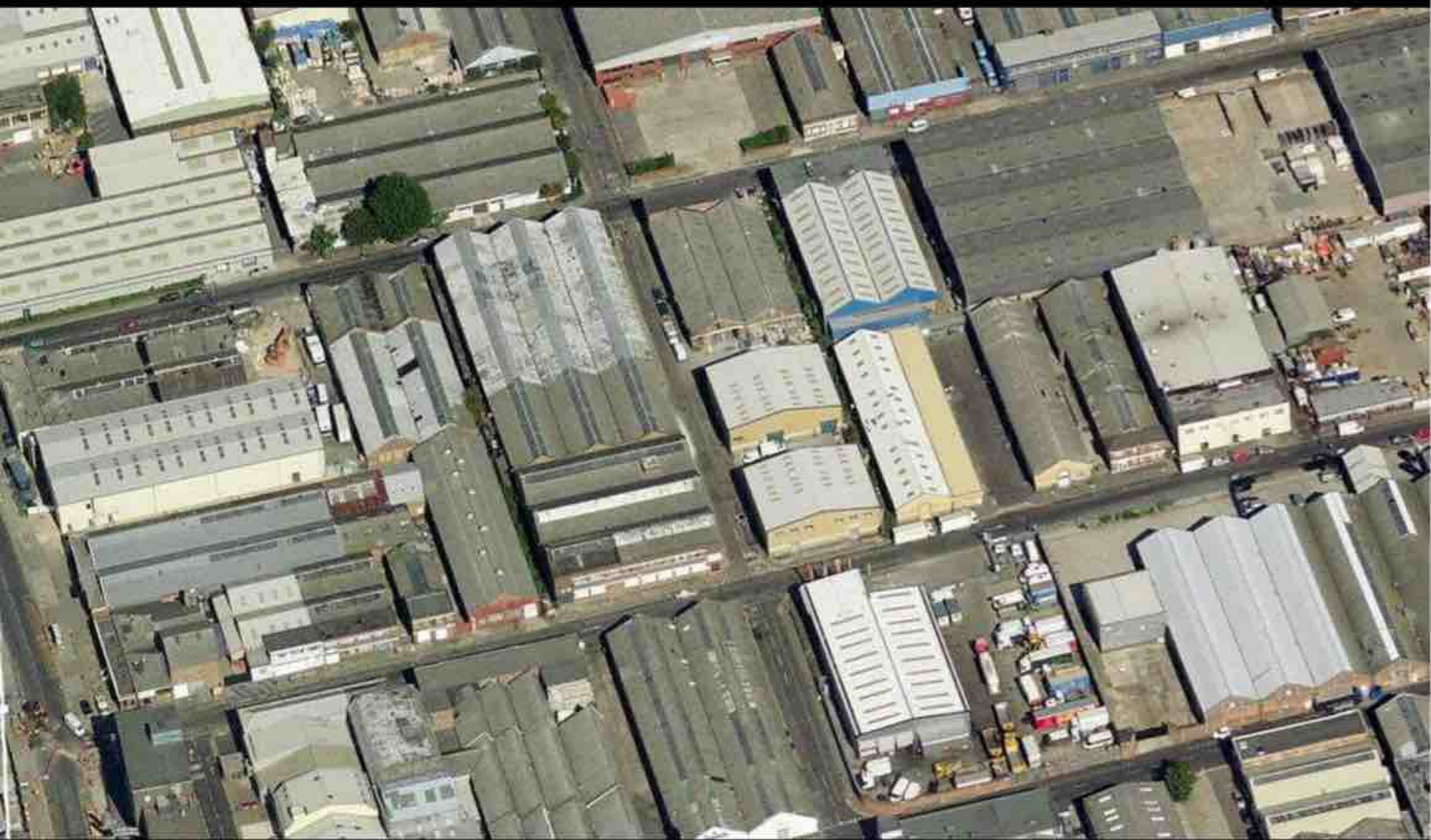
Industrial area of Pescara



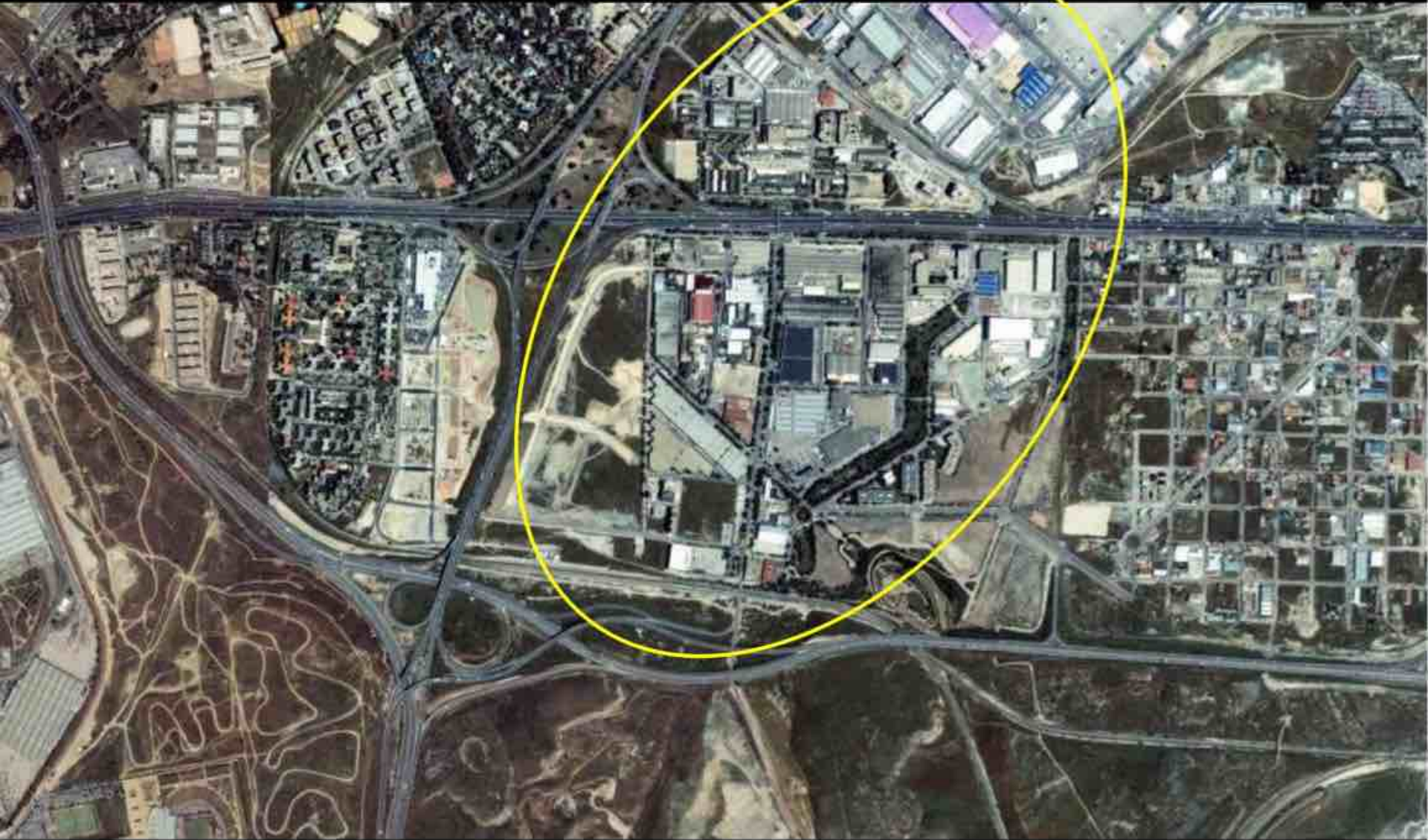
Industrial area of Pescara



Industrial Area - London



Industrial Area - London



Industrial Area - Madrid



Industrial Area - Madrid



Industrial Area - Madrid



Industrial area - Cologne



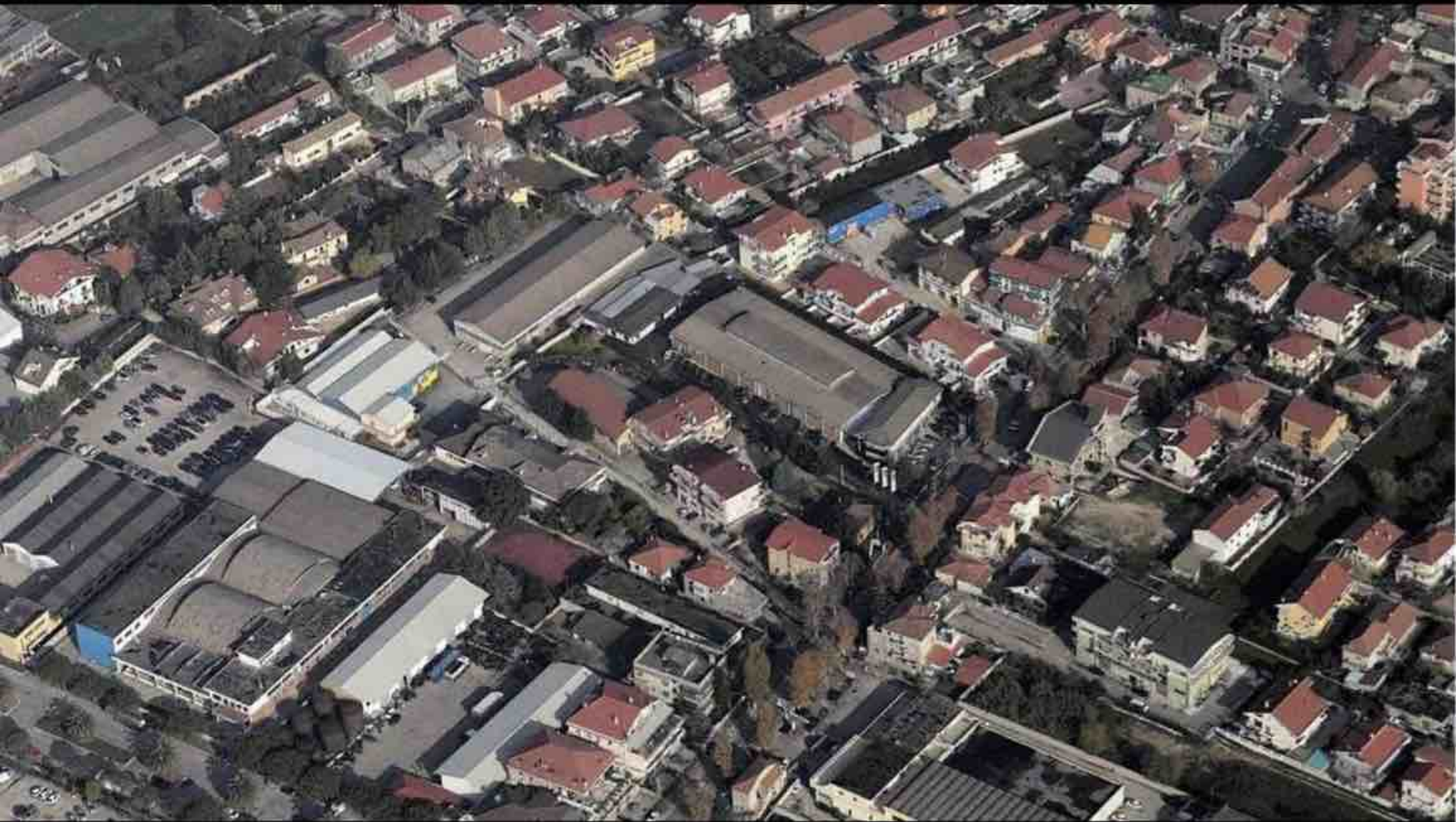
Industrial area - Cologne



# spontaneous artisan settlements



Mixed-use industrial-residential area - Pescara



Mixed-use industrial-residential area - Pescara



Mixed-use industrial-residential area - Pescara



Mixed-use industrial-residential area - Pescara



Mixed-use industrial-residential area - Catania



Mixed-use industrial-residential area - Catania



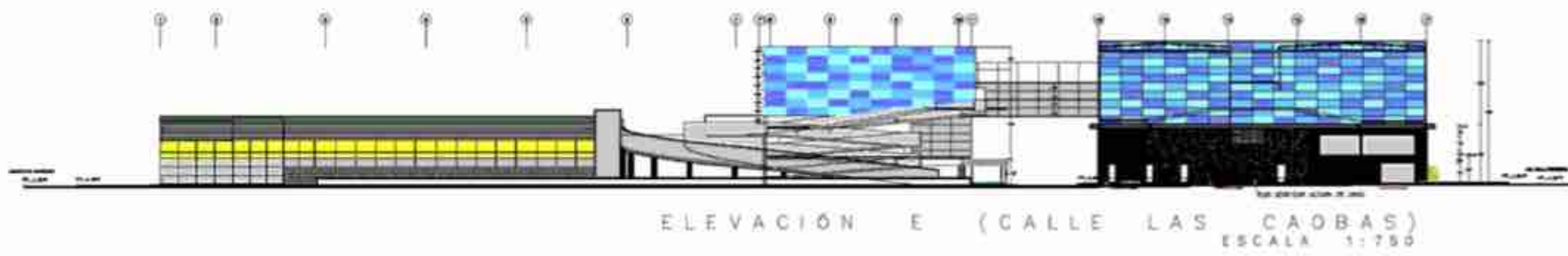
Mixed-use industrial-residential area - Vicenza



Mixed-use industrial-residential area - Vicenza



# shopping centers

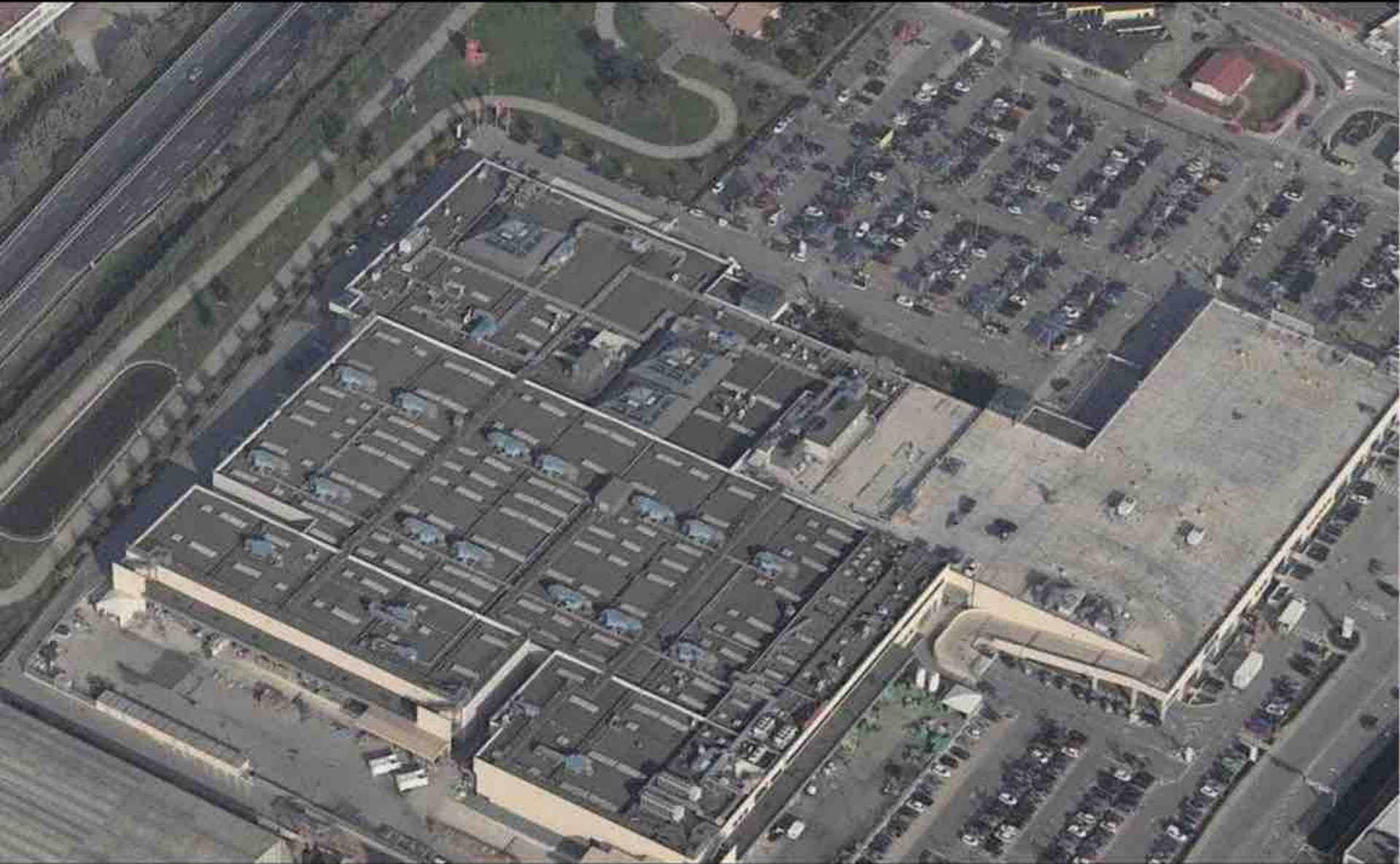


ZZO





Abruzzo Center - Pescara



Abruzzo Center - Pescara



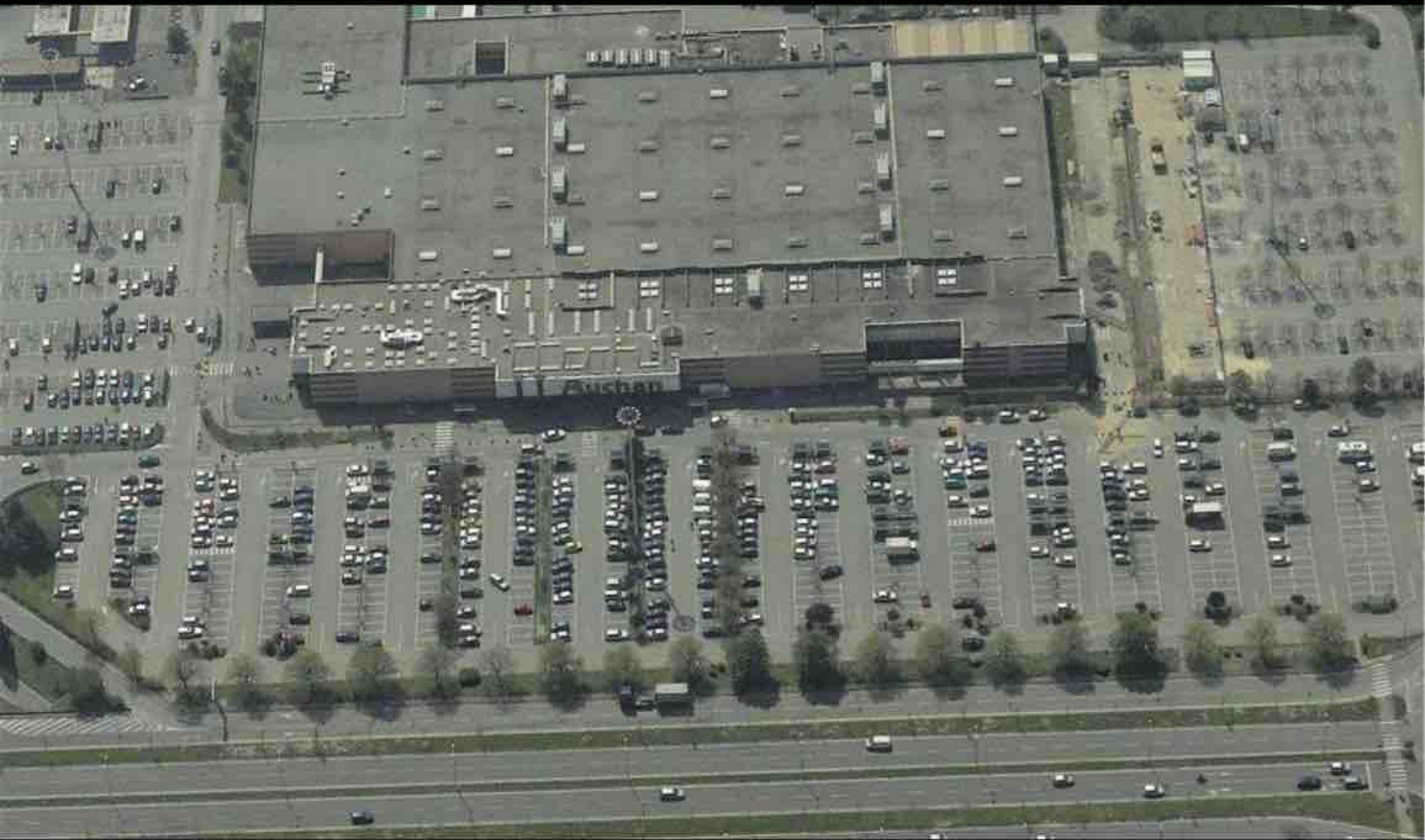
Auchan - Pescara



Auchan - Pescara



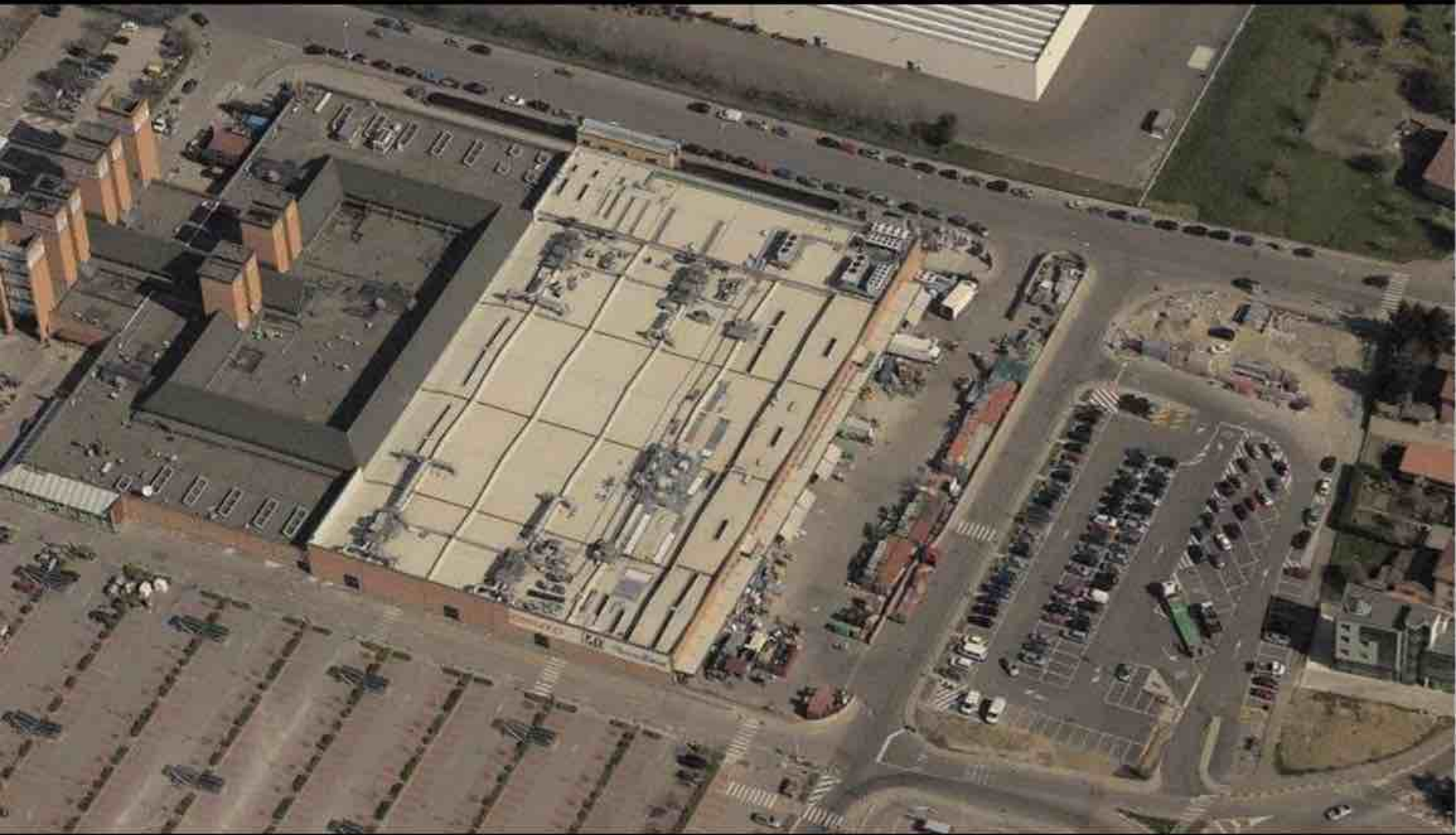
Auchan - Bergamo



Auchan - Bergamo



Tower Center - Parma



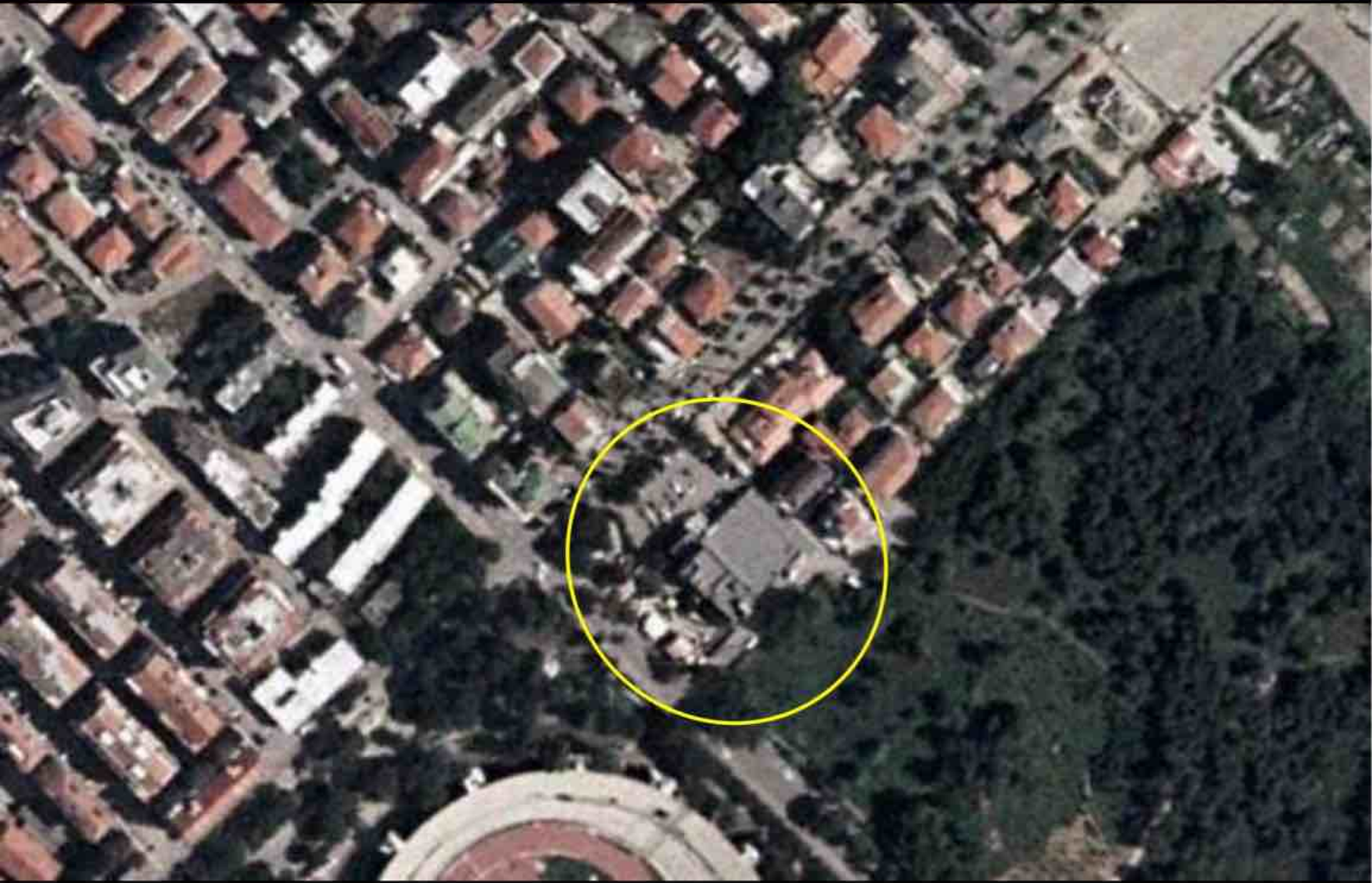
Tower Center - Parma



Tower Center - Parma



# neighborhood supermarkets

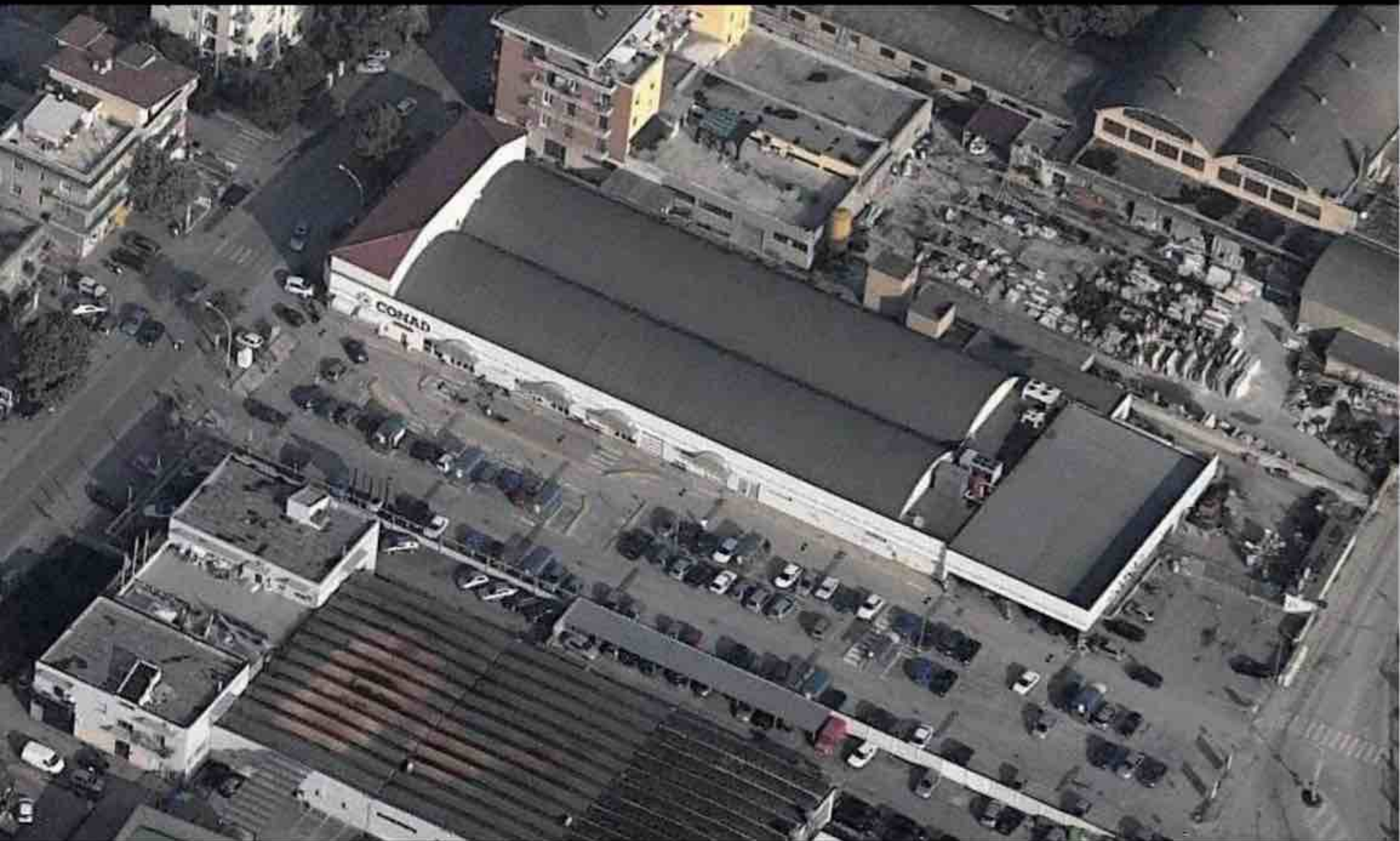












# Book contents in A3 format

- **Cover** according to the established layout; **title block** of each page according to the established layout.

**Each topic** identified in the slides published on the website (e.g., industrial zones, sports stadiums, shopping centers, neighborhood supermarkets, etc.) must be represented in one or more tables constructed using a methodology capable of **breaking down the study object** (highways, urban parks, regional sports facilities, etc.) **into individual constituent elements**. **Therefore, the working group members must first meet to compile a reasoned list of the main elements that comprise the object.**

theme+ca

For example, for urban-scale commercial facilities (hypermarkets), the individual elements into which the object can be broken down are:

- 1) remote location, yet easily accessible and highly visible; 2) direct connection to **primary roads** ; 3) available **parking**; 4) **out of scale** with respect to the surrounding buildings;
- 5) **arcade** and related services.

single element of the theme

Each individual constituent element must be represented at least through the following materials:

- a **title** , - one or more significant **images** , **graphics** that overlap the photographic image (or appear alongside it) to highlight the element being studied and analyze its functioning in relation to the context,
- a brief **caption** that explains the characteristics of the element, especially in relation to the urban context.

A general explanatory text can (if necessary) illustrate the general characteristics of each topic.

**The aim of the workshop** is therefore to urban objects **function** **disaggregating them into individual elements** and **reassembling them in relation to** their context. Particular attention must therefore be paid to the **interpretation of the urban context**.

## PRODUCTION AREAS

---

- large industrial plants
- industrial areas
- spontaneous artisan settlements
- shopping centers
- neighborhood supermarkets.

For each of these categories, please include at least two A3 pages of the book: the first part introduces the topic in general; the second part reports specific case studies from the Pescara metropolitan area.

For the graphic layout, make abundant use of: written text, photographs, graphs and images taken from the research carried out.